

**BREAKTHROUGH TECHNOLOGY.
HEAVY DUTY PERFORMANCE.**



Epson's unique inkjet printer with tractor feeder delivers unsurpassed durability, endurance and printout quality to withstand the demanding conditions of the chemical and logistics industries. With the reliability to last 6x longer than conventional inkjet printers and exceptional ink capacity that allows longer continuous printing, frequent downtime will be a thing of the past.



C830



Print



High Capacity



High Speed Printing



Power Savings



Cost Effective

IT'S IN THE DETAILS.

Assured reliability

Rated up to 600,000 pages in its lifetime.

High-capacity ink cartridges

Prints large volumes continuously with greater savings and reduced downtime.

Sharper printouts

Durable pigment ink lets you print without the worry of smudges and fading.

Whether it's the chemical or logistics industries, Epson's inkjet printer with a tractor feeder is built to meet the toughest label printing specifications. With a long life suited for high print volume operations, high-capacity ink cartridges and sharp printouts on ultra-durable ink, business will run as reliably as your next printout.



Uninterrupted Heavy-duty Performance with Reduced Downtime

Assured Reliability

Epson's C830 inkjet printer is tough enough to handle the needs of industries and medical institutions that cannot afford downtime. With an impressive lifecycle of 600,000 pages* – 6x longer than conventional inkjet printers – downtime is dramatically reduced while the bottom line is improved with a lower total cost of ownership.

* When printing on 241.3 mm x 279.4 mm (9.5" x 11") paper. Varies depending on usage environment, print pattern and type of paper used.

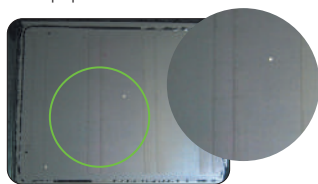
Easy Paper Handling

Even the best printers jam. With Epson technology, clearing paper jams is quick and fuss free. The C830 automatically releases paper guide when a jam is detected, allowing for the rapid removal and re-setting of media. Manual release can also be performed with a simple one-touch operation. Additionally, the top cover slides open easily for quick removal and print restart.

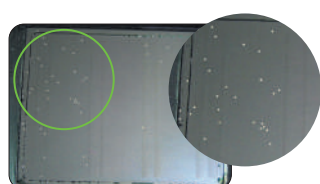
Revolutionary Print-head Protection

Printers that use fanfold paper tend to collect paper dust on the print head, which results in frequent nozzle clogging and missing ink dots. Epson's head protection system drastically reduces the accumulation of dust and dirt, providing longer continuous operation between periodic maintenance.

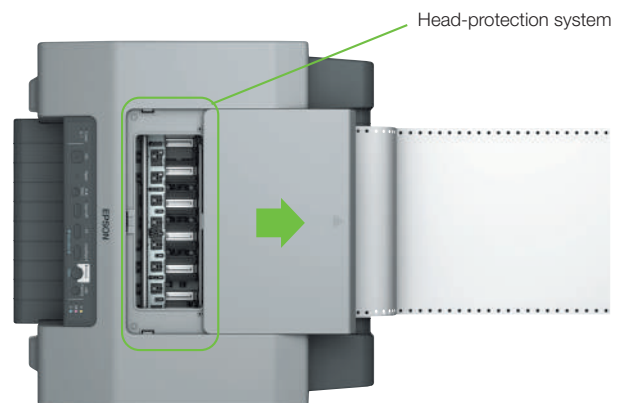
Paper-edge guide protects print head from paper dust.



Head-protection system



No head-protection system

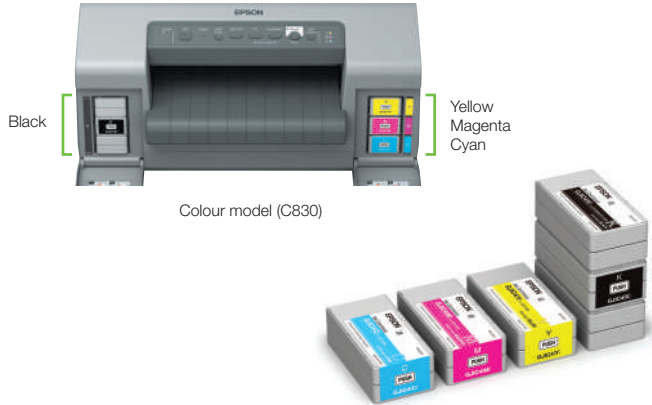


The top cover slides open – a convenient safety feature that stops operation.

Effortless Workflow and Operation

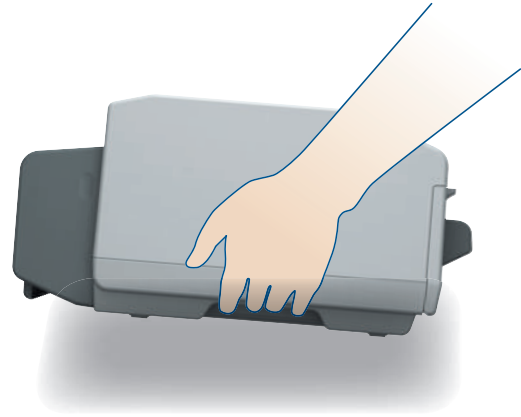
High-capacity Ink Cartridges

High-capacity ink cartridges enable affordable, large-volume printing while dramatically decreasing downtime spent changing cartridges, creating more uptime and less periodic maintenance.



Built for Tough Work Environments

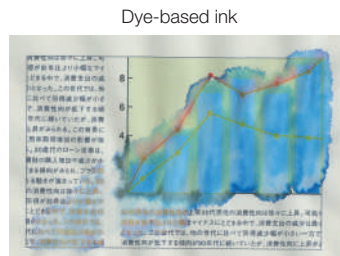
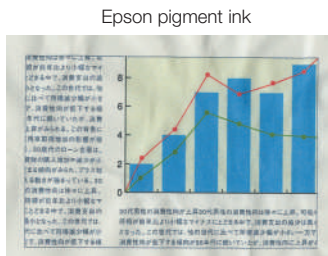
Built tough for demanding work environments, the C830 can withstand weights of up to 20 kg on the top. Comfortable side grips accommodating four fingers are also featured, making relocation easier.



Outstanding Output and Durability

Sharper Printouts

Epson DURABrite™ Ultra produces high-quality prints that have excellent resistance to water, chemicals, fading and smudges. Durability like this makes C830 ideal for hospitals, laboratories, supermarkets and wherever liquids or other moisture is present.



Epson pigment ink is not water soluble and firmly binds to media fibers, resisting water and other moisture.

Conventional dye-based ink is water soluble so printouts can be negatively affected by water and other moisture.

Reduced Noise and Power Usage

Unlike conventional dot impact printers, C830 inkjet printer operates quietly and do not contribute to workplace noise. In addition, they also consume less energy, which is a huge advantage for energy-conscious offices and in areas with inconsistent power supply.

Barcodes are Clear and Sharp

Installing the included printer driver automatically loads fonts for barcode printing, assuring razor-sharp barcodes even on plain paper.

Barcode print comparison (end of ink supply)



C830



Conventional dot impact printer

Crisp, high-density barcodes are printed consistently until the ink runs out.

Faint, low-density barcodes when the ribbon is nearly used up exhibit decreased readability.

High Output that Reduces Costs

The C830 shines in workplaces where fast printing is vital – with a fast 19.7* ppm for C830. Overall running costs are lower compared to laser printers.

* Super draft mode.

PARTNERS IN PERFECTION

Save more with Epson individual cartridges

Enjoy greater savings with Epson's cost-effective ink cartridges. You can now maximise the usage of your ink cartridges by only replacing the empty cartridge, allowing for continuous printing.

Our four colours are:



C13S020559
GJIC4 (K) INK BLACK



C13S020560
GJIC4 (C) INK CYAN



C13S020561
GJIC4 (M) INK MAGENTA

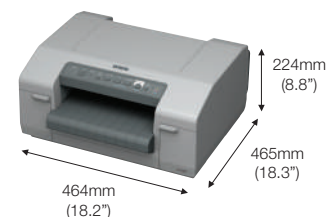


C13S020562
GJIC4 (Y) INK YELLOW

MODEL NUMBER	C830
Print Technology	MicroPiezo® ink jet technology
Print Resolution	
Plain Media	Up to 720 x 720 dpi
Glossy Media	Up to 5760 x 1440 dpi **
Ink Cartridge	Pigment ink
Individual Cartridges	
Black	GJIC4(K) x 1
Cyan	GJIC4(C) x 1
Magenta	GJIC4(M) x 1
Yellow	GJIC4(Y) x 1
Print Speed †²	
Super Draft Mode	19.7 ppm
Draft Mode	19.7 ppm
Normal Mode	18.1 ppm
Fine Mode	10.2 ppm
Extra Fine 1 Mode	3.5 ppm
Extra Fine 2 Mode	3.5 ppm
Extra Fine 3 Mode	1.3 ppm
Paper Feeding Method	Push tractor feed (rear in / front out)
Paper Feed Speed	Continuous feed 66.7ms / inch
Media Form	Continuous with sprocket holes
Media Type	Plain, Glossy, Medicine Bag, Plain Label, Matte Label, Synthetic Label, Glossy Label
Media Dimension	
Width	76.2 - 241.3 mm (3" - 9.5")
Length †³	12.7 - 558.8 mm (0.5" - 22")
Thickness †⁴	0.065 - 0.14 mm (0.0025" - 0.0055")
Weight (1000 sheets) †⁴	45 - 110 kg
Printable Area	
Maximum Printable Area Width	203.2 mm (8")
Left Margin	13.0 mm (0.51")
Right Margin	13.0 mm (0.51") †⁵
Top Margin	2.0 mm (0.08")
Bottom Margin	2.0 mm (0.08")
Barcode Font (Printer Driver Built-in)	
Barcode	Code 39, Code 128, Interleaved 2 of 5
Two-dimensional Code	QR Code
Barcode Font (ESC/P Command)	EAN-13, EAN-8, Interleaved 2 of 5 (ITF), UPC-A, UPC-E, Code39, Code128, POSTNET
Interface	
	USB 1.1/ 2.0
	Parallel (IEEE-1284 Compatibility mode, Nibble mode)
	LAN 100BASE-TX/10BASE-T
Operating Temperature / Humidity	10 - 35 °C / 20 - 80 % RH
Storage Temperature / Humidity	-20 - 40 °C / 5 - 85 % RH
Reliability	
Total Print Volume	0.6 million sheets [Paper size: 241.3 x 279.4 mm (9.5" x 11")]
Overall Dimensions (D x W x H)	465 x 464 x 224 mm
Weight	Approx. 12.2kg (without ink cartridge)
Power Supply	Dedicated AC Adapter
Power Consumption	
Printing	Approx. 33W (mean, ISO/IEC 10561 letter pattern)
Standby	Approx. 8W (in sleep mode approx. 2.9W)
Rated Voltage	AC 110 - 240 V (AC adaptor)
Rated Frequency	50 - 60 Hz
Acoustic Noise	
Silent Feed ON	Approx. 48 dB(A)
Silent Feed OFF	Approx. 54 dB(A)
EMC Standards	CNS13438 Class A
Safety Standards	FCC (Class A), UL/C-UL, EN60950, CE Marking (EMC Directive (Class A), VCC1 (Class A), Singapore Safety Standard)
Operating System	Microsoft® Windows® XP 32bit (SP3) / 64bit (SP2) Microsoft® Windows Vista® 32bit / 64bit (SP2) Microsoft® Windows® 7 32bit / 64bit Microsoft® Windows Server® 2003 Microsoft® Windows Server® 2008 / 2008 R2 Microsoft® Windows® 8 32bit / 64bit Microsoft® Windows Server® 2012 (64bit)

Dimensions & Weight

Weight: Approx. 12.2 kg (28.89lbs)



Main Unit

C11CC68021 C830 Colour Inkjet Label Printer

Consumables

- C13S020559 GJIC4(K) Ink Cartridge Black
- C13S020560 GJIC4(C) Ink Cartridge Cyan
- C13S020561 GJIC4(M) Ink Cartridge Magenta
- C13S020562 GJIC4(Y) Ink Cartridge Yellow

dpi: Dots per 25.4mm (dots per inch)
ppm: Pages per minute

†¹ Print mode: Extra Fine 3 Mode

†² The print speed measured based on paper size of 9.5" x 11".

†³ Printing on continuous paper when 139.7mm (5.5") or less is not supported.

†⁴ Plain paper

†⁵ When paper width is 229.2mm or wider, the width of the printable area remains at 203.2mm (max.) and the right margin expands up to 25.1mm, depending on paper width.

©2019 Epson Singapore Pte Ltd. All Rights Reserved. Reproduction in part or in whole, without the written permission from Epson, is strictly prohibited.

EPSON and EXCEED YOUR VISION are registered trademarks of Seiko Epson Corporation.

All other product names and other company names used herein are for identification purposes only and are the trademarks or registered trademarks of their respective owners.

Epson disclaims any and all rights in those marks. Print samples shown herein are simulations. The actual product design and contents may vary. Specifications are subject to change without notice and may vary between countries. Please check with local Epson offices for more information.

Information correct as at February 2019

Usage Restrictions:

When this product is used for applications requiring high reliability / safety such as transportation devices related to aviation, rail, marine, automotive etc.; disaster prevention devices; various safety device etc; or functional / precision device etc, you should use this product only after giving consideration by inclusion of fail-safes and redundancies into your design to maintain safety and total system reliability. Because this product was not intended for use in applications requiring extremely high reliability / safety such as aerospace equipment, main communication equipment, nuclear power control equipment, or medical equipment related to direct medical care etc, please make your own judgment on this product's suitability after full evaluation.

Epson ColorWorks ink is not intended for direct food contact.



Lim Kim Hai Electric Co (S) Pte Ltd

Lim Kim Hai Building,
53 Kallang Place, Singapore 339177

T (+65) 6292 3711 • (+65) 6490 5000

F (+65) 6297 0078

E customerservice@limkimhai.com.sg

W www.limkimhai.com.sg