

**3M** Science.  
Applied to Life.™

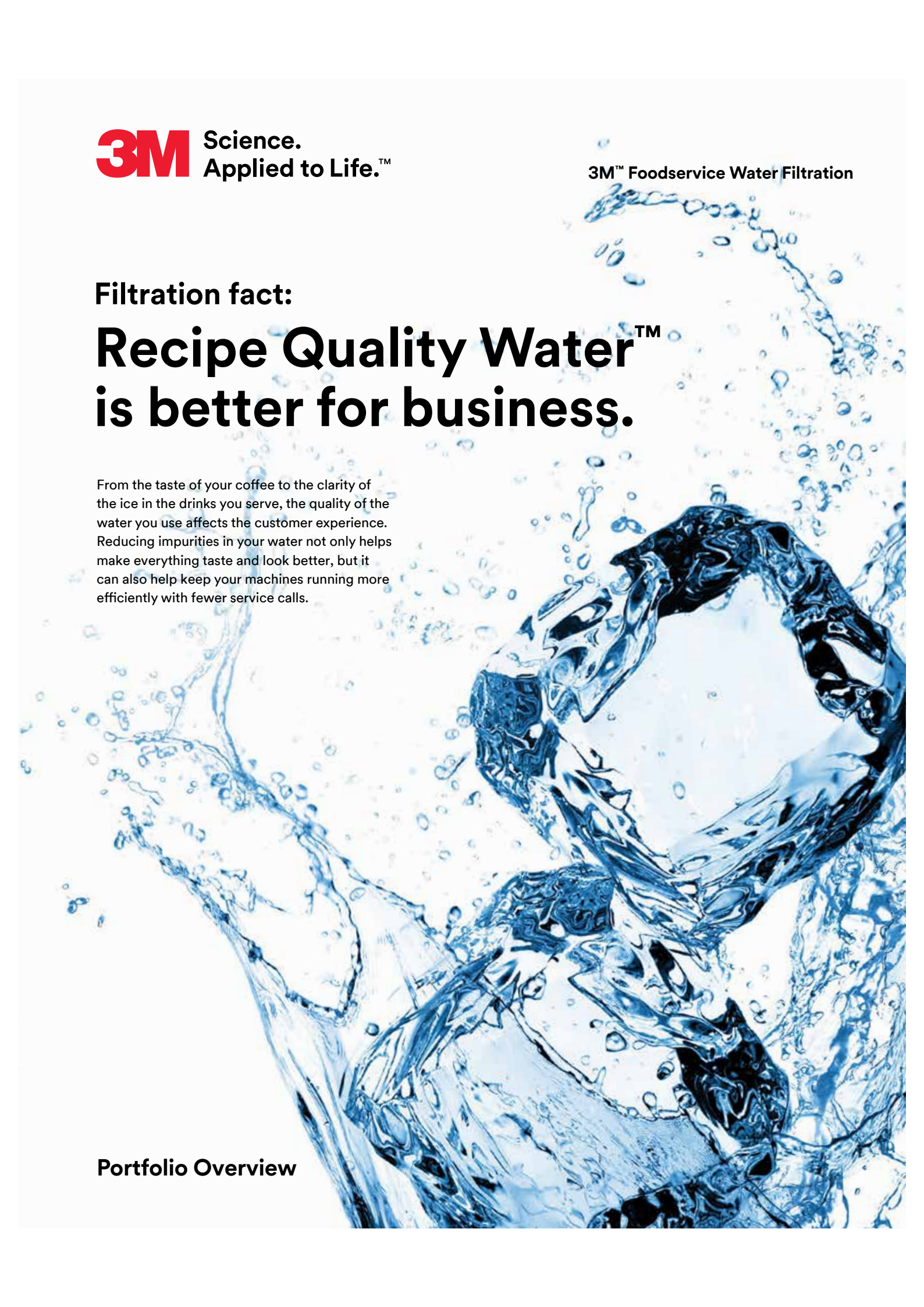
3M™ Foodservice Water Filtration

Filtration fact:

# Recipe Quality Water™ is better for business.

From the taste of your coffee to the clarity of the ice in the drinks you serve, the quality of the water you use affects the customer experience. Reducing impurities in your water not only helps make everything taste and look better, but it can also help keep your machines running more efficiently with fewer service calls.

Portfolio Overview



## 3M™ Foodservice Water Filtration

### About 3M

3M captures the spark of new ideas and transforms them into thousands of ingenious products. We're a leader in scores of markets—from healthcare and highway safety, to office products and abrasives and adhesives.

Our success begins with our culture of creative collaboration that inspires a never-ending stream of powerful technologies and product solutions that make life better. We have an ability to apply our technologies—often in combination—to an endless array of real-world customer needs. Of course, all of this is made possible by the people of 3M, and their singular commitment to make life easier and better for people around the world.



### 3M Purification

We have long been regarded as an industry leader in the design, manufacturing and marketing of water filtration products that help to provide solutions for today's ever-changing water quality concerns. We are committed to providing innovative, cost-effective products that help protect people, equipment and our environment.

### NSF Certified\*

The NSF mark is your assurance that 3M water filter products have been rigorously tested by one of the world's most respected independent certification organizations. NSF is trusted by consumers, manufacturers, retailers and regulatory agencies worldwide<sup>1</sup> to help protect the world's food, water, consumer product and environment<sup>2</sup>.

\*Select products. Please refer to NSF.org for complete listing.  
1. [www.nsf.org/about-nsf/nsf-mark](http://www.nsf.org/about-nsf/nsf-mark) | 2. [www.nsf.org/about-nsf](http://www.nsf.org/about-nsf)







# Innovation that makes an impact.

3M™ Water Filtration Products are simple, effective and easy-to-install solutions for commercial foodservice applications. These systems are designed to meet the volume, water clarity and maintenance expectations of restaurant owners, fast food chain and convenience store operators, supermarkets, cafeterias and institutions.

For cold, brewed, ice and specialty beverages, or steamer, combi oven and other foodservice applications, there's a 3M solution that's ideal for you—including cyst and bacteria reduction, as well as filters especially constructed for water with high particulate matter.

## Get to Know H<sub>2</sub>O

**Increase your potential with dealer certification training.**

Learn about water chemistry, water filtration, water treatment fundamentals and more with the 3M Purification Certification Program. Through four levels of certification, you'll get the tools you need to recommend, size, install and service water filtration and water treatment products in foodservice environments.

**Visit [3M.com/FoodServiceTraining](http://3M.com/FoodServiceTraining) to register for classroom or online training.**



**Available on select models.**

*3M's long standing commitment to sustainable development through environmental protection, social responsibility and economic progress has resulted in 3M Purification being the first company to achieve Water Quality Association (WQA) Sustainability Certification under the new WQA Product Sustainability standards.*

## 3M™ High Flow Series Cartridges

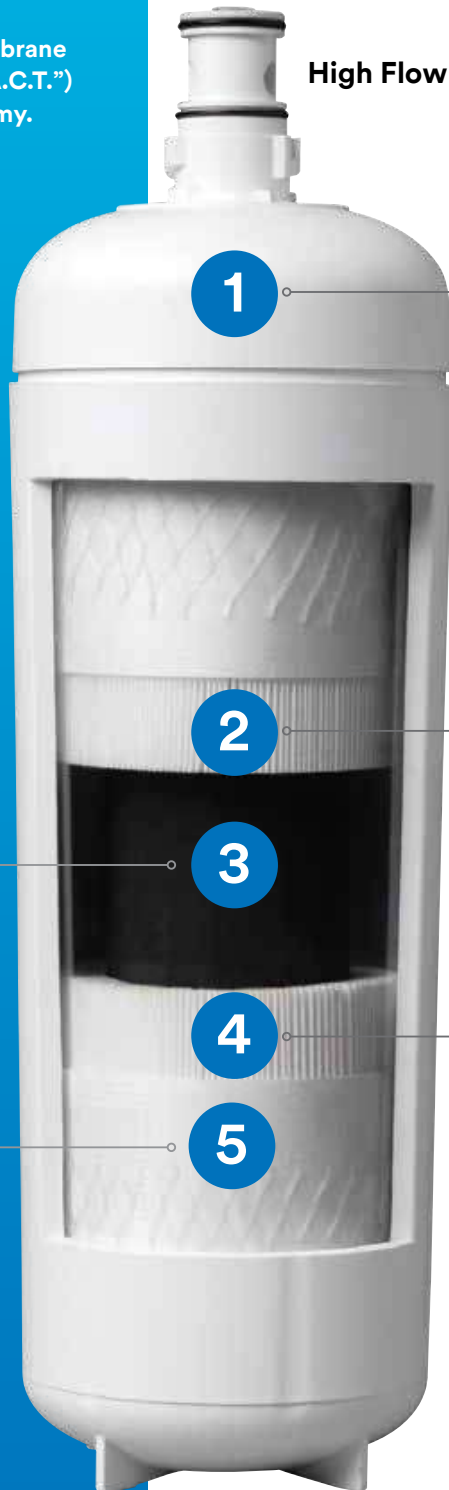
# Water filtration technology.

3M™ High Flow Series with Integrated Membrane Pre-Activated Carbon Technology (“I.M.P.A.C.T.”) provides excellent cartridge life and economy.

- ▶ Single-cartridge flow rates and capacities previously available only with three- or four-cartridge systems<sup>3</sup>
- ▶ Up to 12-month cartridge life
- ▶ Fast and easy cartridge change-outs with Sanitary Quick Change (SQC) encapsulated cartridge design
- ▶ Direct or easily adaptable connections to existing plumbing lines
- ▶ Certification to NSF Standard 53 for cyst reduction
- ▶ Reduction of 99.99 percent of waterborne bacteria<sup>1</sup>
- ▶ **Recipe Quality Water™** for all commercial foodservice applications

Carbon block technology **has more than 4X** the chlorine taste and odor reduction capacity of the leading competitor's pre-coat filter

Cartridges feature a 5 micron pre-filter wrap



High Flow HF90

1 Polypropylene housing

2 Media with pleated membrane design<sup>3</sup> helps provide cyst and bacteria<sup>1</sup> reduction and excellent sediment holding capabilities with minimal pressure drop

4 Pleated membrane media in HF90 has **6X** the surface area of leading competitor's filter

<sup>1</sup> As tested with E. Coli ATCC (11229). Tested and verified by manufacturer's laboratory.

<sup>2</sup> Based on the use of Cryptosporidium parvum oocysts.

<sup>3</sup> Filters featuring the Integrated Membrane Pre-Activated Carbon Technology (“I.M.P.A.C.T.”) media can clearly be identified by the (“I.M.P.A.C.T.”) icon on the product label.



3M™ Foodservice Water Filtration

# Contents

Ice.....	6
Coffee and Hot Tea.....	8
Cold Beverage.....	10
Espresso.....	12
Multi-Equipment Combinations.....	14
Steamers, Combi Ovens and Proofer Ovens.....	16
Reverse Osmosis Systems.....	18
Chloramine Reduction Systems.....	20

Cold, hard fact:

**Ice is 100% water.  
You want to keep it that way.**

**The Challenge:**

Excess sediments, chlorine residual and scale build-up can clog distribution tubes, cause chlorine smell and corrosion, and increase maintenance costs.







1 cartridge can deliver over  
**216,000**  
 pounds of ice

## The Solution:

3M™ Water Filtration Products provide built-in scale inhibition as well as chlorine taste and odor and particulate reduction. This can help to reduce service calls and downtime—increasing bottom line profitability.

## Ice Water Filtration Systems

Have 100% confidence in your water.

Ice				
Model	Replacement Cartridge	Flow Rate (GPM)	Capacity (Gals)	Reduction Claims
ICE120-S	HF20-S	1.50	9,000	Particulate, chlorine taste and odor, cyst <sup>1</sup> , scale
ICE125-S	HF25-S	1.50	10,000	Particulate, chlorine taste and odor, scale
ICE140-S	HF40-S	2.50	25,000	Bacteria <sup>2</sup> , particulate, chlorine taste and odor, cyst <sup>1</sup> , scale
ICE145-S	HF45-S	2.10	25,000	Particulate, chlorine taste and odor, scale
ICE160-S	HF60-S	3.34	35,000	Bacteria <sup>2</sup> , particulate, chlorine taste and odor, cyst <sup>1</sup> , scale
ICE165-S	HF65-S	3.34	35,000	Particulate, chlorine taste and odor, scale
ICE190-S	HF90-S	5.0	54,000	Bacteria <sup>2</sup> , particulate, chlorine taste and odor, cyst <sup>1</sup> , scale
ICE195-S	HF95-S	5.0	54,000	Particulate, chlorine taste and odor, scale



<sup>1</sup> Based on the use of Cryptosporidium parvum oocysts.

<sup>2</sup> As tested with E. Coli ATCC (11229). Tested and verified by manufacturer's laboratory.

The bitter truth:

# Guests want coffee breaks, not breakdowns.

## The Challenge:

Scale build-up, excess particulates and excess chlorine can lead to downtime and shorter service life of your equipment. Plus, excess chlorine and organic residue can cause beverages to taste bitter. These problems could lead to inconsistent service and beverage quality—and lost business.



## The Solution:

3M™ Water Filtration Products can help maintain coffee and tea beverage clarity, consistency and full flavor along with efficient brewing machine operations.

A single cartridge can deliver over  
**56,000**  
 8-oz cups of coffee

## Coffee and Hot Tea Water Filtration Systems

Give your customers coffee breaks they can count on.

Coffee and Tea				
Model	Replacement Cartridge	Flow Rate (GPM)	Capacity (Gals)	Reduction Claims
BREW110-MS	HF10-MS	1.00	3,500	Particulate, chlorine taste and odor, cyst <sup>1</sup> , asbestos, scale
BREW115-MS	HF15-MS	1.00	3,500	Particulate, chlorine taste and odor, scale
BREW120-MS	HF20-MS	1.50	9,000	Particulate, chlorine taste and odor, cyst <sup>1</sup> , scale
BREW125-MS	HF25-MS	1.50	10,000	Particulate, chlorine taste and odor, scale
BREW130-MS	HF30-MS	1.67	14,000	Particulate, chlorine taste and odor, cyst <sup>1</sup> , scale



<sup>1</sup> Based on the use of Cryptosporidium parvum oocysts.

Let's be clear:

# Excess particulates can clog your revenue streams.

## The Challenge:

Excess particulates can shorten the service life of expensive parts of beverage machines. High particulate matter and excess chlorine and chloramines residual can affect the look and taste of beverages.

**+96%**  
average chlorine  
taste and odor  
reduction



## The Solution:

Sanitary Quick Change designed systems from 3M™ Water Filtration Products reduce particulates and chlorine taste and odor.

## Cold Beverage Water Filtration Systems

Keep your revenue streams flowing with great tasting beverages and happy customers.

Cold Beverage				
Model	Replacement Cartridge	Flow Rate (GPM)	Capacity (Gals)	Reduction Claims
BEV130	HF30	1.67	14,000	Particulate, chlorine taste and odor, cyst <sup>2</sup>
BEV135	HF35	1.67	12,600	Particulate, chlorine taste and odor
BEV140	HF40	2.50	25,000	Bacteria <sup>1</sup> , particulate, chlorine taste and odor, cyst <sup>2</sup>
BEV145	HF45	2.10	25,000	Particulate, chlorine taste and odor
BEV160	HF60	3.34	35,000	Bacteria <sup>1</sup> , particulate, chlorine taste and odor, cyst <sup>2</sup>
BEV165	HF65	3.34	35,000	Particulate, chlorine taste and odor
BEV190	HF90	5.0	54,000	Bacteria <sup>1</sup> , particulate, chlorine taste and odor, cyst <sup>2</sup>
BEV195	HF95	5.0	54,000	Particulate, chlorine taste and odor



<sup>1</sup> As tested with E. Coli ATCC (11229). Tested and verified by manufacturer's laboratory.

<sup>2</sup> Based on the use of Cryptosporidium parvum oocysts.



Water 101:

# Fewer service calls means better profits.

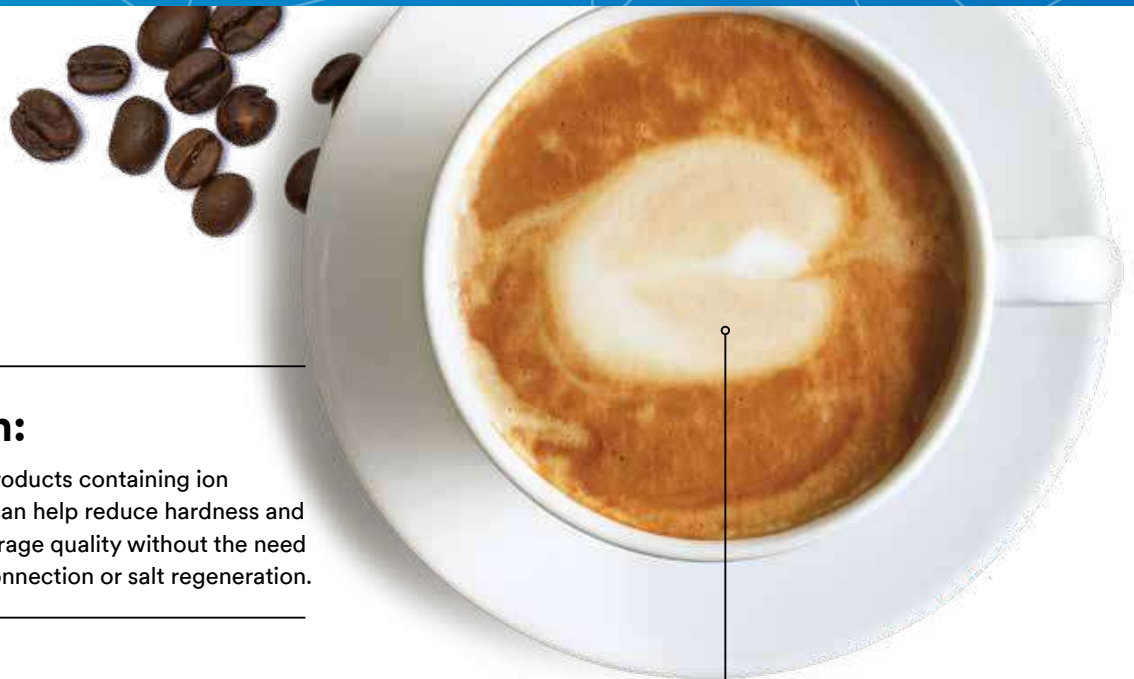
## The Challenge:

Excess chlorine can oxidize parts and fittings, and excessive hardness can form scale in your espresso equipment, reducing service life and causing bitter-tasting beverages.



## The Solution:

3M™ Water Filtration Products containing ion exchange resin media can help reduce hardness and improve espresso beverage quality without the need for a drain, electrical connection or salt regeneration.



Water makes up  
**98%**  
of an espresso

## Espresso Water Filtration Systems

Answer the call for fewer service calls, loyal customers and better profits.

Espresso					
Model	Replacement Cartridge	Flow Rate (GPM)	Capacity (Gals)	Micron	Reduction Claims
ESP124-T	PS124	0.5	1,100 grains	1.0	Softening, chlorine taste and odor
SGP124BN-T	P-124BN	0.5	422.6 gals @ 10.5 gpg	1.0	Hard scale, chlorine taste and odor
SGP165BN-T	P-165BN	1.0	719 gals @ 9.0 gpg	0.5	Hard scale, chlorine taste and odor
SGP195BN-T	P-195BN	1.0	1,200 gals @ 9.0 gpg	1.0	Hard scale, chlorine taste and odor

ScaleGard™ Blend Series of Cartridges			
Model	Flow Rate (GPM)	Capacity (Gals)	Reduction Claims
B145-CLS	0.5	530 gals @ 11 gpg	Hard scale, chlorine taste and odor, chloramines
B165-CLS	0.5	749 gals @ 11 gpg	Hard scale, chlorine taste and odor, chloramines
B195-CLS	0.5	1,249 gals @ 11 gpg	Hard scale, chlorine taste and odor, chloramines

ScaleGard™ Blend Series of Heads	
Model	BH3-NPT Head
	BH3M-NPT Head
	BH3WM-NPT Head



**Water 101:**  
**Fewer filters means  
less waste.**

**The Challenge:**

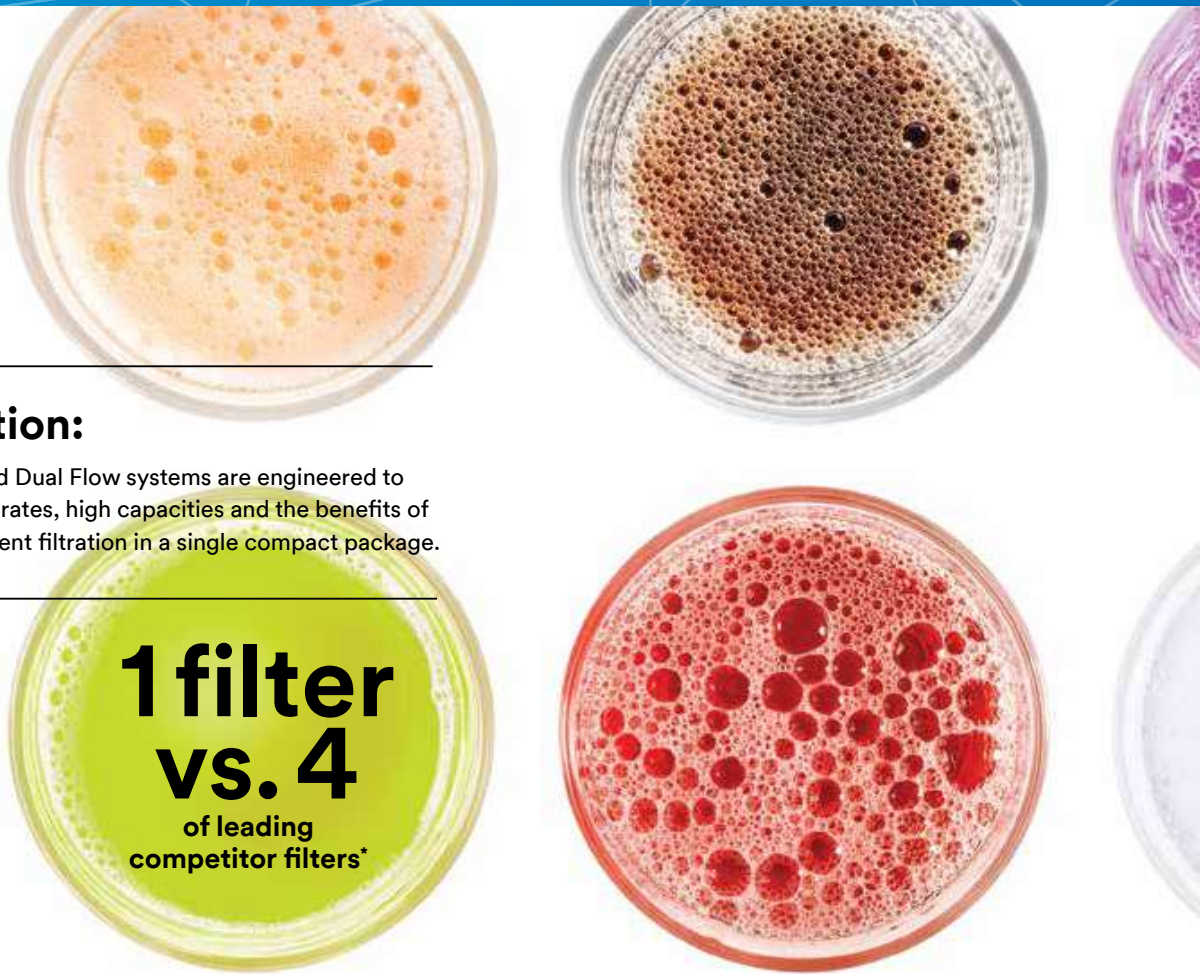
Providing filtered water to a variety of equipment can require different water characteristics.





## The Solution:

3M™ Dual Port and Dual Flow systems are engineered to provide high flow rates, high capacities and the benefits of individual equipment filtration in a single compact package.



## Multi-Equipment Water Filtration Systems

Reduce scale build-up, chlorine taste and odor and chloramines with 3M™ Water Filtration Products.

Multi-Equipment					
Model	Replacement Cartridge	Flow Rate (GPM)	Capacity (Gals)	Micron	Reduction Claims
DP260	CARTPAK DP260	6.68	70,000	0.2	Bacteria <sup>1</sup> , particulate, chlorine taste and odor, cyst <sup>2</sup> , scale
DP190	CARTPAK DP190	5.0	54,000	0.2	Bacteria <sup>1</sup> , particulate, chlorine taste and odor, cyst <sup>2</sup> , scale
DP290	CARTPAK DP290	10.0	108,000	0.2	Bacteria <sup>1</sup> , particulate, chlorine taste and odor, cyst <sup>2</sup> , scale
DP295-CL	CARTPAK DP295-CL	5.0	60,000	5.0	Particulate, chloramines, chlorine taste and odor, scale
DP390	CARTPAK DP390	15.0	162,000	0.2	Bacteria <sup>1</sup> , particulate, chlorine taste and odor, cyst <sup>2</sup> , scale
DF290-CL	CARTPAK DP290-CL	2.66 Bev 5 Ice	25,000	0.2	Bacteria <sup>1</sup> , particulate, chlorine taste and odor, cyst <sup>2</sup> , chloramines, scale



\* One of 3M's HF90 cartridges has six times the membrane/media surface area, four times the sediment holding capacity, and greater chlorine taste and odor reduction than four of the leading competitor's water filters.

<sup>1</sup> As tested with E. Coli ATCC (11229). Tested and verified by manufacturer's laboratory.

<sup>2</sup> Based on the use of Cryptosporidium parvum oocysts.

**Filtration fact:**

**The right filter could save  
a \$20,000 machine.**

**The Challenge:**

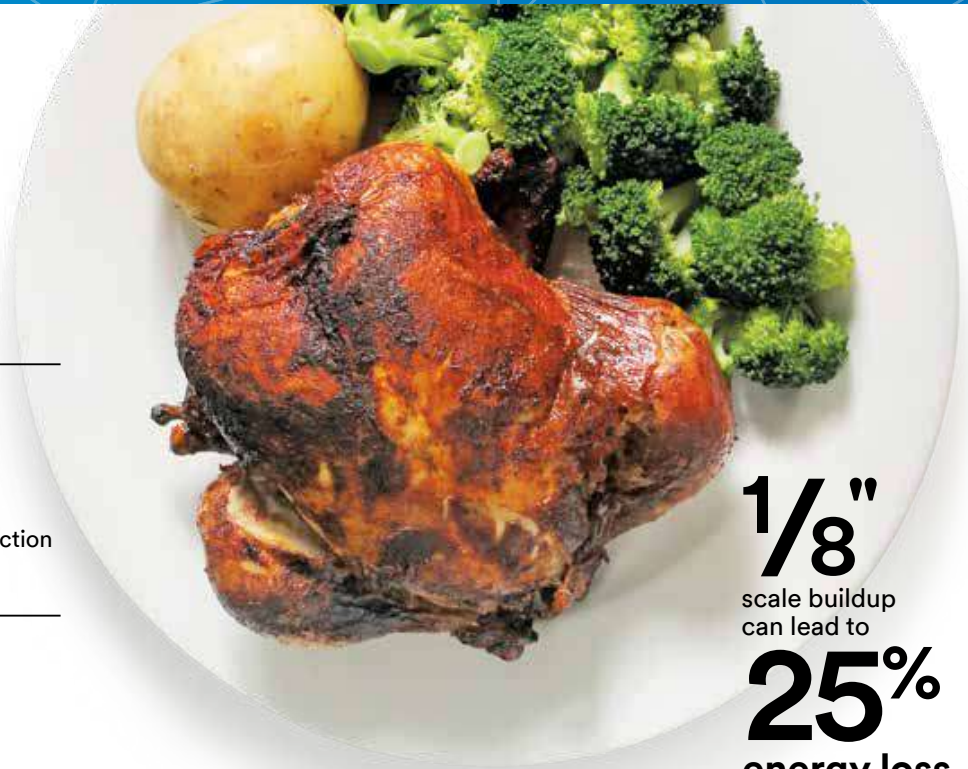
Scale build-up can increase energy consumption or blocked drains, while chlorine, chloramines, and chlorides may increase equipment corrosion, meaning more service calls and reduced service life.





## The Solution:

3M™ Water Filtration Products Reverse Osmosis Systems are designed for cost-effective reduction of scale in steam equipment.



**1/8"**  
scale buildup  
can lead to  
**25%**  
energy loss

## Steam Equipment Water Filtration Systems

Help protect your expensive back-of-house equipment from poor water quality.

Steamers, Combi Ovens and Proofer Ovens			
Model	Capacity	Applications	Reduction Claims
SGLP-075	75 gpd* (283.9 lpd)*	Countertop flash steamers	Particulate, chlorine taste and odor, TDS
TFS450	Up to 300 gpd (1,135.6 lpd w/o blending)**	Coffee	Particulate, chlorine taste and odor, TDS
ScaleGard™ HP	750 gpd* (2,839 lpd) w/o blending*	Steamers	HF90-CL-RO cartridge: Bacteria <sup>1</sup> , particulate, chloramines, CTO, cyst <sup>2</sup> HFRO500 cartridge: TDS
SGLP100-CL	100 gpd* (379 lpd)*	Combi Ovens, Steamers	Particulate, chlorine taste and odor, TDS, chloramines



Maximum 18-month change-out recommended. Periodical evaluation of membrane recommended for optimum quality and flow.

\*RO production rates listed are at a water pressure and temperature of 60 psi and 77°F producing water at atmosphere.

\*\*RO production rates listed are at a water pressure and temperature of 70 psi and 77°F producing water at atmosphere.

<sup>1</sup> As tested with E. Coli ATCC (11229). Tested and verified by manufacturer's laboratory.

<sup>2</sup> Based on the use of Cryptosporidium parvum oocysts.



**Cold hard fact:**

# **It's easy to solve hard water issues.**

## **The Challenge:**

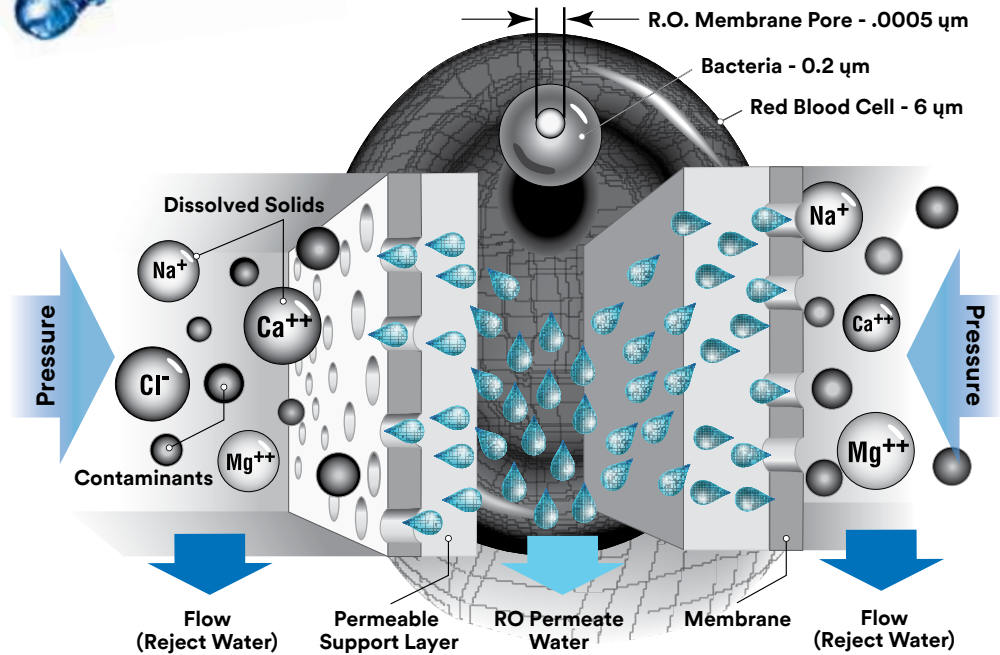
When water is cooled, heated or converted to steam, it leaves impurities behind. These impurities cling to the surfaces they come in contact with and can cause problems over time.



Hard water  
is found in more than  
**85%**  
of the U.S.



### Inside a Reverse Osmosis Membrane



### The Solution:

3M™ Water Filtration Reverse Osmosis Systems are designed to reduce hardness minerals, particulates and chlorine taste and odor that can cause equipment to require service, decreasing profitability.

### Reverse Osmosis Water Filtration Systems

Get the water quality and consistency you need for success in the competitive foodservice industry.

Reverse Osmosis Systems			
Model	Capacity	Applications	Reduction Claims
SGLP-075	75 gpd* (283.9 lpd)*	Countertop flash steamers	Particulate, chlorine taste and odor, TDS
TFS450	Up to 300 gpd (1,135.6 lpd w/o blending)**	Coffee	Particulate, chlorine taste and odor, TDS
ScaleGard™ HP	750 gpd* (2,839 lpd) w/o blending*	Steamers	HF90-CL-RO cartridge: Bacteria <sup>1</sup> , particulate, chloramines, CTO, cyst <sup>2</sup> HFRO500 cartridge: TDS
SGLP100-CL	100 gpd* (379 lpd)*	Combi Ovens, Steamers	Particulate, chlorine taste and odor, TDS, chloramines



Maximum 18-month change-out recommended. Periodical evaluation of membrane recommended for optimum quality and flow.

\*RO production rates listed are at a water pressure and temperature of 60 psi and 77°F producing water at atmosphere.

\*\*RO production rates listed are at a water pressure and temperature of 70 psi and 77°F producing water at atmosphere.

<sup>1</sup> As tested with E. Coli ATCC (11229). Tested and verified by manufacturer's laboratory.

<sup>2</sup> Based on the use of Cryptosporidium parvum oocysts.

Water 101:

# Corrosive chloramines can eat into your profits.

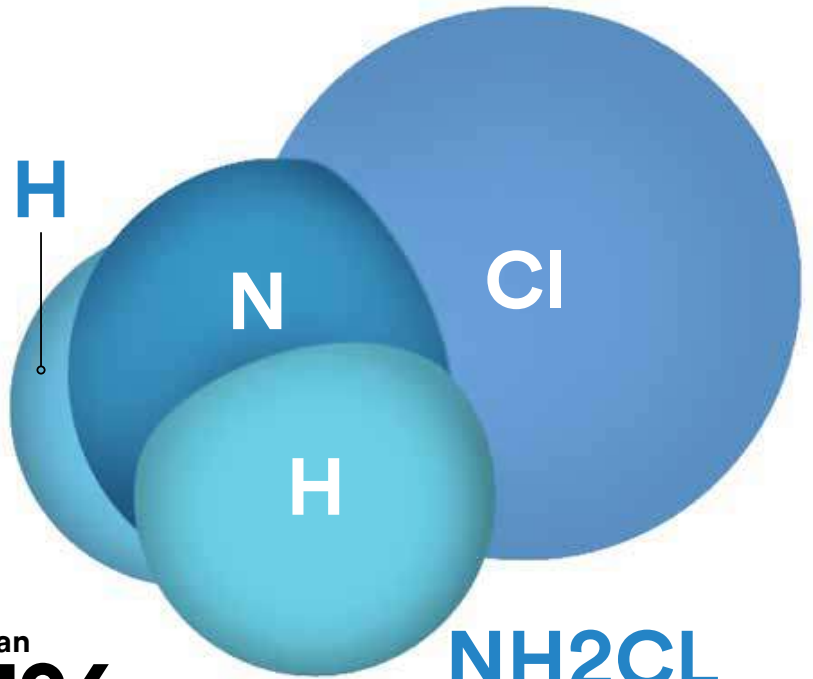
## The Challenge:

Chloramines are known to be corrosive and can damage any equipment that uses water, and standard activated carbon technology is ineffective for reducing chloramines.



## The Solution:

3M™ Water Filtration Chloramine Reduction Systems use specially formulated activated carbon to help prevent corrosion while reducing particulates, cysts, chloramines and chlorine taste and odor.



More than  
**55%**  
of Americans on municipal  
water supplies are using  
water treated with  
**chloramines**

**NH<sub>2</sub>Cl**

*Chloramines is an inorganic compound created by adding small amounts of ammonia to chlorine. The resulting compound is chemically more stable than chlorine, which means it dissipates far less quickly and thus ensures better disinfection.*

## Chloramine Reduction Water Filtration Systems

Help protect your steamers, combi ovens, coffee and tea brewers, espresso machines and more from corrosive chloramines with 3M™ Water Filtration products.

Chloramine Reduction Systems					
Model	Replacement Cartridge	Flow Rate (GPM)	Capacity (Gals)	Micron	Reduction Claims
HF160-CLS	HF60-CLS	2.2	4,700	0.2	Bacteria <sup>1</sup> , particulate, chloramines, chlorine taste and odor, cyst <sup>2</sup> , scale
HF160-CL	HF60-CL	2.2	4,700	0.2	Bacteria <sup>1</sup> , particulate, chloramines, chlorine taste and odor, cyst <sup>2</sup>
HF165-CL	HF65-CL	2.1 1.7 1.0	7,000 8,000 15,000	5.0	Particulate, chloramines, chlorine taste and odor
HF195-CL	HF95-CL	2.5	30,000	5.0	Particulate, chloramines, chlorine taste and odor
HF265-CL	(2) HF65-CL	4.2	14,000	5.0	Particulate, chloramines, chlorine taste and odor
HF295-CL	HF95-CL	5	60,000	5.0	Particulate, chloramines, chlorine taste and odor
DP295-CL	DP295-CL	5	60,000	5.0	Particulate, chloramines, chlorine taste and odor, scale



<sup>1</sup> Based on the use of Cryptosporidium parvum oocysts.

<sup>2</sup> As tested with E. Coli ATCC (11229). Tested and verified by manufacturer's laboratory.









**Product Selection and Use:** Many factors beyond 3M's control and uniquely within user's knowledge and control can affect the use and performance of a 3M product in a particular application. As a result, customer is solely responsible for evaluating the product and determining whether it is appropriate and suitable for customer's application, including conducting a workplace hazard assessment and reviewing all applicable regulations and standards (e.g., OSHA, ANSI, etc.). Failure to properly evaluate, select, and use a 3M product and appropriate safety products, or to meet all applicable safety regulations, may result in injury, sickness, death, and/or harm to property.

**Warranty, Limited Remedy and Disclaimer:** Unless a different warranty is specifically stated on the applicable 3M product packaging or product literature (in which case such warranty governs), 3M warrants that each 3M product meets the applicable 3M product specification at the time 3M ships the product. 3M MAKES NO OTHER WARRANTIES OR CONDITIONS, EXPRESS OR IMPLIED, INCLUDING, BUT NOT LIMITED TO, ANY IMPLIED WARRANTY OR CONDITION OF MERCHANTABILITY, FITNESS FOR A PARTICULAR PURPOSE, OR ARISING OUT OF A COURSE OF DEALING, CUSTOM, OR USAGE OF TRADE. If a 3M product does not conform to this warranty, then the sole and exclusive remedy is, at 3M's option, replacement of the 3M product or refund of the purchase price.

**Limitation of Liability:** Except for the limited remedy stated above, and except to the extent prohibited by law, 3M will not be liable for any loss or damage arising from or related to the 3M product, whether direct, indirect, special, incidental, or consequential (including, but not limited to, lost profits or business opportunity), regardless of the legal or equitable theory asserted, including, but not limited to, warranty, contract, negligence, or strict liability.



3M Purification  
400 Research Parkway  
Meriden, CT 06450, U.S.A.  
Toll Free: 1-866-990-9785  
Worldwide: 203-237-5541  
Fax: 203-238-8701  
[www.3Mfoodservice.com](http://www.3Mfoodservice.com)

Clear things up at  
**3MFoodservice.com**



**Lim Kim Hai Electric Co (S) Pte Ltd**  
Lim Kim Hai Building,  
53 Kallang Place, Singapore 339177  
T (+65) 6292 3711 • (+65) 6490 5000  
F (+65) 6297 0078  
E [customerservice@limkimhai.com.sg](mailto:customerservice@limkimhai.com.sg)  
W [www.limkimhai.com.sg](http://www.limkimhai.com.sg)