



CorePro LED tube EM/ Mains T8

Corepro LEDtube HO 1200mm 18W840T8 AP

LED, T8, 18 W, 4000 K, 2100 lm, 50000 hour(s)

Philips CorePro LEDtubes are the quick and easy way to replace T8 fluorescent or other LED tubes with a fast pack back time. Not only does the Core range of LEDtubes require a low initial investment, but LED energy efficiency also delivers instant savings that you can bank on over a long and reliable lifetime. Plus, with the same lamp size and light distribution as fluorescent alternatives, you'll never know the difference. There are two ways to install these LED tubes: Rewire your existing fluorescent-based luminaires so the CorePro LEDtubes work directly on the Mains. Or simply change the fluorescent starter to an LED starter that can be used with your Electromagnetic ballasts.

Warnings and Safety

- NOTE: The overall energy efficiency and light distribution of any installation that uses these lamps will be determined by the design of the installation.
- Installation must be done according to the installation diagrams provided with the lamp or available online. Installation must be done by a certified professional.

Product data

General Information		Light Technical	
Cap-Base	G13 [Medium Bi-Pin Fluorescent]	Color Code	840 [CCT of 4000K]
Nominal lifetime	50,000 hour(s)	Beam Angle (Nom)	240 degree(s)
Switching Cycle	200,000	Luminous Flux	2,100 lm
Lighting Technology	LED	Color Designation	Cool White (CW)
		Correlated Color Temperature (Nom)	4000 K
		Luminous Efficacy (rated) (Nom)	116.00 lm/W

CorePro LED tube EM/Mains T8

Color Consistency	<6
Color rendering index (CRI)	80
LLMF At End Of Nominal Lifetime (Nom)	70 %

Operating and Electrical

Line Frequency	50 to 60 Hz
Input Frequency	50 to 60 Hz
Power Consumption	18 W
Lamp Current (Max)	97 mA
Lamp Current (Min)	97 mA
Starting Time (Nom)	0.5 s
Warm-up time to 60% light	0.5 s
Power Factor (Fraction)	0.9
Voltage (Nom)	220-240 V

Temperature

T-Case Maximum (Nom)	55 °C
----------------------	-------

Controls and Dimming

Dimmable	No
----------	----

Mechanical and Housing

Bulb Finish	Frosted
Bulb Material	Glass

Product Length	1,200 mm
Bulb Shape	T8
Net Weight (Piece)	0.200 kg

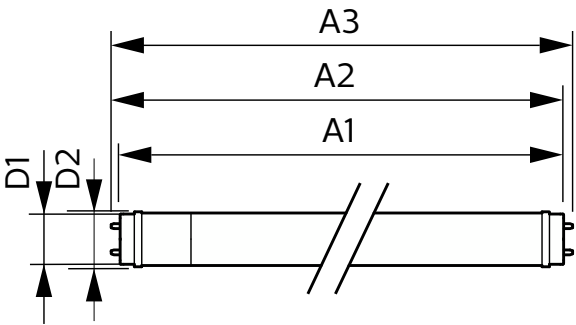
Approval and Application

Energy Saving Product	Yes
Approval Marks	RoHS compliance CE marking KEMA Keur certificate
EU RoHS compliant	Yes
Ambient temperature range	-20 °C to 45 °C

Product Data

Order product name	Corepro LEDtube HO 1200mm 18W840T8 AP
Full product name	Corepro LEDtube HO 1200mm 18W840T8 AP
Full product code	871951444711000
Order code	929003520708
Material Nr. (12NC)	929003520708
Numerator - Quantity Per Pack	1
EAN/UPC - Product/Case	8719514447110
Numerator - Packs per outer box	20
EAN/UPC - Case	8719514447127

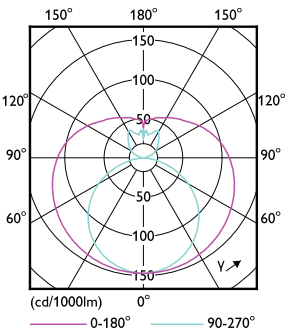
Dimensional drawing



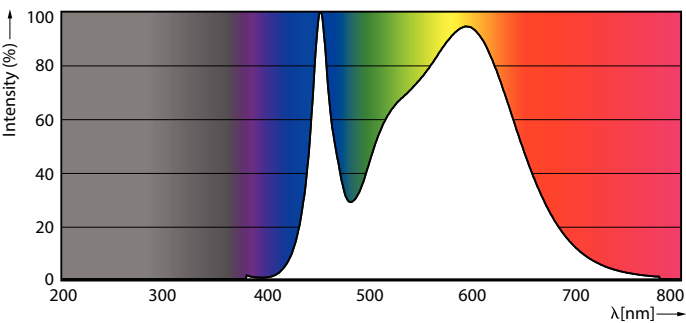
Product	D1	D2	A1	A2	A3
Corepro LEDtube HO 1200mm 18W840T8 AP	25.7 mm	28 mm	1,198 mm	1,205 mm	1,212 mm

CorePro LED tube EM/Mains T8

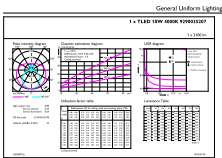
Photometric data



Light Distribution Diagram - Corepro LEDtube HO 1200mm 18W840T8 AP



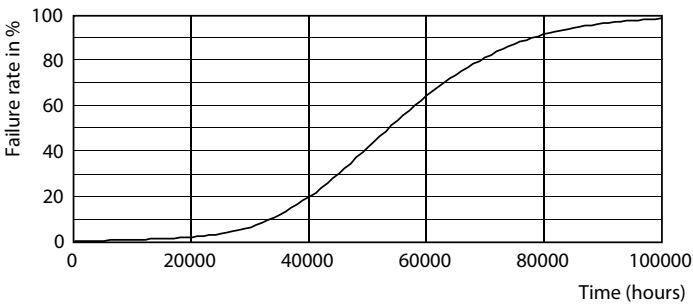
Spectral Power Distribution Colour - Corepro LEDtube HO 1200mm 18W840T8 AP



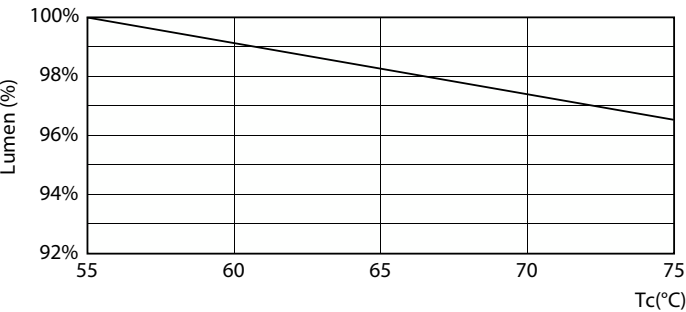
General uniform lighting - Corepro LEDtube HO 1200mm 18W840T8 AP

General uniform lighting - Corepro LEDtube HO 1200mm 18W840T8 AP

Lifetime



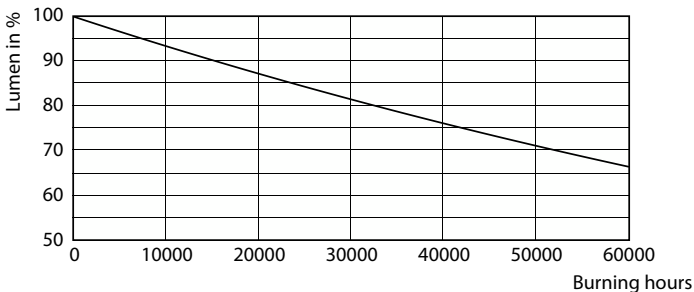
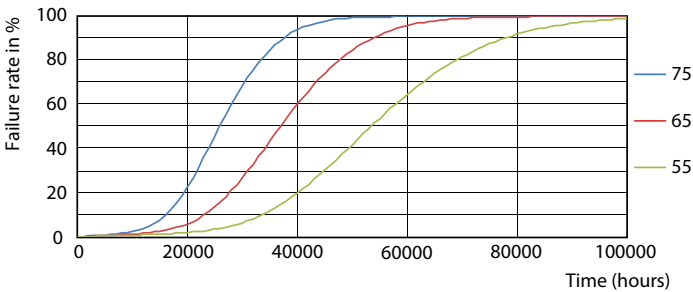
Life Expectancy Diagram



Lumen Maintenance Diagram - Corepro LEDtube HO 1200mm 18W840T8 AP

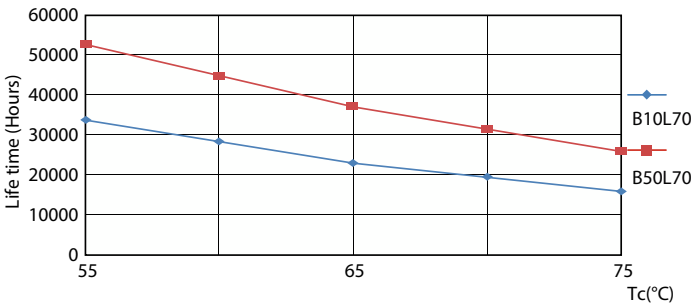
CorePro LED tube EM/Mains T8

Lifetime



FailureRate

Lumen Maintenance Diagram - Corepro LEDtube HO 1200mm 18W840T8 AP



LifetimeVsTc

